



# BETHANY CHURCH

The 29<sup>th</sup> Chapter of Acts...*The Ancient Story Continues*

April 2025

## Read About:

-  *Children's Ministry News*
-  *Stations of the Cross*
-  *Good Friday Service*
-  *Easter Sunday*
-  *Continental Breakfast*
-  *Easter Flowers*
-  *Daily Bible Readings*
-  *Daily Devotions*
-  *Book-of-the-Month Book Club*
-  *Small Group Opportunities*
-  *GriefShare*
-  *Shine Your Light*
-  *Peanut Butter Collection*
-  *Apple Dumplings*
-  *Operation Christmas Child*
-  *Donations Needed for The Den After School Program*



This month's newsletter  
is sponsored  
by Brenda Evans  
in memory of loved ones.



Join us on  
*Easter*

SUNDAY  
April 20<sup>th</sup>

8:30 – 10:30 AM ~ Continental Breakfast in the Social Hall

9 AM Worship in Contemporary

Sunday School for Children (9 AM) & Adults (9:15 AM)

10:30 AM Worship in Traditional

also livestreamed on YouTube & Church Online

## April Meetings

Stewardship & Finance Committee – Monday, April 7<sup>th</sup>, 7 PM, in the Upper Room  
Board of Trustees – Thursday, April 10<sup>th</sup>, 7 PM in the Upper Room



Dear Beloved Bethany Family,

As the first rays of dawn touched the tomb that Sunday morning, the women approached with heavy hearts, expecting to find only the cold, still body of our Lord. But what they discovered shattered their expectations and forever changed the course of history.

Luke 24:1-12 recounts their astonishment: the stone rolled away, the empty tomb, the angelic messengers declaring, "Why do you seek the living among the dead? He is not here, but has risen!" Their initial disbelief quickly gave way to a daring hope, as they rushed to share this incredible news with the disciples.

This Easter, may we too experience that same awe and wonder. May the empty tomb remind us that death has been defeated, and that the power of resurrection is real and active in our lives. Like the women, let us be bearers of good news, sharing the joy of Jesus' victory with all those that God has brought within our influence.

Let us not dwell in the tombs of our doubts and fears, but embrace the living Jesus who offers us new life, forgiveness, and eternal hope. May the resurrection power transform our hearts, renew our spirits, and empower us to live as witnesses to His love.

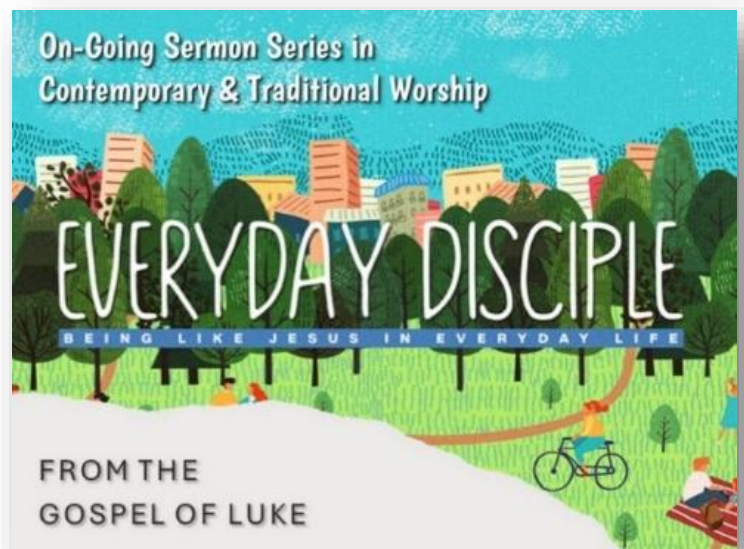
May this Easter season be filled with the profound joy and peace that comes from knowing our Savior lives!

Happy Easter!

*Pastor Don*

**Everyday Disciple  
Sermon Series in  
Contemporary & Traditional**

Jesus wasn't looking for fans. Jesus wasn't looking for likes or followers. Jesus called us to be His disciples. Join us each Sunday morning, with your Bible, as we study together what Jesus taught about being a disciple from the Gospel of Luke.





# Children's Ministry News



## Upcoming Events

### Easter Egg Hunt!

Saturday, April 12<sup>th</sup>  
at 10 AM

Nitchkey Field  
316 West Avenue  
Red Lion

Fellowship and a light lunch  
will be available directly after  
the Egg Hunt!

### Egg Stuffing Party

Friday, April 4<sup>th</sup> @ 6 PM  
in the Children's Department  
See Rachel Zelger if you can help

### Children's Play!

Several children have been hard at  
work over the past few weeks  
organizing a play and are excited to  
share it with you! Join us on  
Sunday, April 13<sup>th</sup> at 10 AM in the  
Children's Department as they act  
out the Easter Story!

### Kid's Connections

Kid's Connections will not meet on  
Wednesday, April 16<sup>th</sup>.







## JOURNEY THROUGH THE



### STATIONS *of the* CROSS

**MONDAY - FRIDAY**

**APRIL 14<sup>TH</sup> - 18<sup>TH</sup>**

**9 AM - 4 PM**

Traditions Sanctuary ~ Self-Guided with pamphlet ~ No appointment necessary

The Stations of the Cross refers to a series of paintings or depictions of the events of the Passion of Christ and the prayers associated with these. There are truths to be gleaned from this practice for any believer, reminding us of Jesus' death and sacrifice to save us from sin and redeem us. Please feel free to visit and spend as much time as you like in prayer and reflection.

Youth  
**Ministry**

Youth Connections  
Wednesdays @ 6:30 PM  
in Bethany House  
Will not meet on April 16<sup>th</sup>

  
**Easter Sunday  
Continental  
Breakfast  
April 20<sup>th</sup>  
8:30 – 10:30 AM  
in the Social Hall**

Donations of Baked Goods,  
Breads, and Muffins appreciated.  
Let Ron Nickey know what you  
can bring or if you are able to help  
on Easter Sunday!

**Last Supper  
Good Friday  
Tenebrea Service**

April 18<sup>th</sup> at 7 PM  
in the Sanctuary

## Christian Symbol

**PALM BRANCH** — When Jesus entered Jerusalem days before his death, crowds welcomed him by waving palm branches, common symbols of victory and rejoicing. Churches still use them to remember that occasion, knowing that Jesus' crucifixion was the ultimate triumph over sin and death. As early as Leviticus 23:40, God commanded Israel to use palms in a festival of rejoicing. In Revelation 7:9-10, Christian martyrs carry palm branches as they praise the Lamb before God's throne.



will again grace our Sanctuary and Contemporary Worship Area for Easter Sunday.

**Orders are due in the church office by Sunday, April 6<sup>th</sup>.** You may order a plant in memory of or in honor of a person, class, or loved ones. We will be offering Easter Lilies (\$9.50), Tulips (\$8.75), Hyacinths (\$8.75), Daffodils (\$8.75), Mums (\$9.50), Pansies (\$3.50), Gerbera Daisies (\$5.25), and Hydrangeas (\$15.50). Easter Flower envelopes may be found at all entrances to the Sanctuary and in the Information Cubby in Contemporary worship in which you may place your cash or check. Flowers **MUST BE PAID** for when ordering. Please indicate your choice of flower on the envelope and what you would like included in the bulletin. Please place the envelope in the Church Offering Plate or mail to or drop off in the church office. Orders may also be placed at the Giving Kiosk & through the Giving App or through the link in the weekly Blast. If you would like to do something other than contribute a flower, you may make a donation to the work of our Missions Ministry in honor of or in memory of a loved one.

## DAILY BIBLE READINGS

### APRIL

1. Blessed are those invited to the marriage supper Revelation 19:9-10
2. Jesus feeds 5000 Luke 9:10-17
3. Sowing with tears, reaping with joy Psalm 126
4. God is Lord, Holy One, Creator, Ruler Isaiah 43:8-15
5. Passover instituted to celebrate the exodus Exodus 12:21-27
6. Mary anoints Jesus for his burial John 12:1-8
7. Victory for God's anointed Psalm 20
8. Knowing the Son 1 John 2:18-28
9. Jesus foretells his death Luke 18:31-34
10. I commend my spirit Psalm 31:9-16
11. God's love is steadfast Isaiah 54:9-10
12. Sabbath and Passover Leviticus 23:1-8
13. The passion and death of Jesus Luke 22:14 - 23:56
14. Refuge under the shadow of your wings Psalm 36:5-11
15. The servant brings salvation to earth's ends Isaiah 49:1-7
16. Look to Jesus, who endured the cross Hebrews 12:1-3
17. The Passover of the Lord Exodus 12:1-4  
[5-10] 11-14
18. The passion and death of Jesus John 18:1 - 19:42
19. Dying and rising with Christ Romans 6:3-11
20. Women proclaim the resurrection Luke 24:1-12
21. On this day God has acted Psalm 118:1-2, 14-24
22. The woman, the dragon, the child Revelation 12:1-12
23. David dances before the ark 2 Samuel 6:1-15
24. Let everything praise the Lord Psalm 150
25. The beginning of the gospel of Jesus Christ Mark 1:1-15
26. David conquers Goliath 1 Samuel 17:32-51
27. Beholding the wounds of the risen Christ John 20:19-31
28. Peace in Jerusalem Psalm 122
29. Destruction of the Jews is averted Esther 8:1-17
30. The courage to confess Christ Luke 12:4-12

Articles for the May Newsletter are due in the Church Office by April 15<sup>th</sup>.



## PRAYER REQUESTS

can be made on the Connections Card in your weekly bulletin, through the links in the Weekly Blast and on our website, at the Giving Kiosk or through the Giving App (under "contact us"), or call Jen in the church office 717-244-7624. Watch your email for a special "Prayer Blast" on Tuesdays!

## Change of Address

If you are moving, are planning to move, or if the Post Office is changing your address, please notify the church office as soon as possible. The church must pay for all incorrect addresses. We also need the correct mailing addresses of all college students and those attending other schools of higher learning. Thank you!



Please make the following changes to your July 2023 church directory:

### ATTENDANCE

Date	Sunday School	Sunday Worship	Ash Wednesday
March 2 <sup>nd</sup>	34	122	75
March 9 <sup>th</sup>	35	108	-
March 16 <sup>th</sup>	30	96	-



## Praying Hands Day



**3<sup>rd</sup> Sunday of Each Month (April 20<sup>th</sup>)**  
**8:30 – 8:55 AM, 10 – 10:25 AM,**  
**and 11:30 – 11:45 AM**  
 in the hall between  
 Contemporary & Traditional

Please come early to your services or stop by afterward to join us in committing to focused prayer for one another. Prayer is a very important part of our lives together, and we want to highlight it with a nice, welcoming activity that will only take a few minutes. All ages are encouraged to participate.





## Church Staff Openings

The Staff-Pastor-Parish Relations Committee is looking to hire a Youth Ministry Director

for 10 – 15 hours per week. For a copy of the position description or questions, please contact Pastor Don at 717-244-7624, ext. 101.



## Musicians & Vocalists needed

See Pastor Don if you are interested in being part of Bethany's Praise Team

## Bells of Bethany

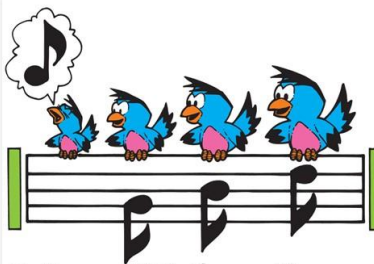


The Handbell Choir is looking for members who enjoy music and would like to be part of this melodic ministry. No experience necessary. Please see Julie Beard for the opportunity to ring the bells!

The Sanctuary Choir sings in the 10:30 AM Traditional Worship Service. Please join us!

We rehearse Sunday mornings at 10 AM in the Choir Room. Come see what it's all about! Questions?

See Julie Beard (717-244-7624)



Calling all Bethany Singers to **ADD YOUR VOICE!**



# Church Book Store

in the Contemporary Worship Area  
All are welcome!

open before Sunday School & the 9 AM Contemporary service; after the 9 AM service; and before & after the 10:30 AM Traditional Service. Books are priced at cost; please pay in the church office.

## YOUVERSION BIBLE APP



Download the YouVersion Bible app (or go to our website and click the link on the home page) and join with us as we explore different reading plans and Bible studies throughout the year together as a church. Create an account in the app, go to friends, search for Bethany Church Red Lion, and send the friend request. Once accepted, you're ready to go. Contact Justin Zelger or Pastor Don with any questions or for additional details.

## Daily Devotions

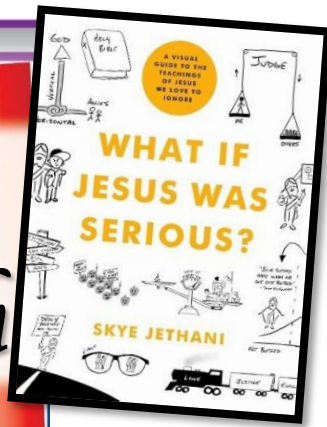
This month, the following devotionals can be accessed through YouVersion (<https://my.bible.com/reading-plans/> insert the number listed at the devotional) or click on the link in the Special Bethany Blast on Sundays:

**Lent: A Journey Through 7 Spiritual Disciplines** (35748) – Through April 19<sup>th</sup>

**Simply Good News** (21325)  
April 20<sup>th</sup> – 26<sup>th</sup>

**How to Give My Best to God** (30063)  
April 27<sup>th</sup> – May 1<sup>st</sup>

# Book of the Month

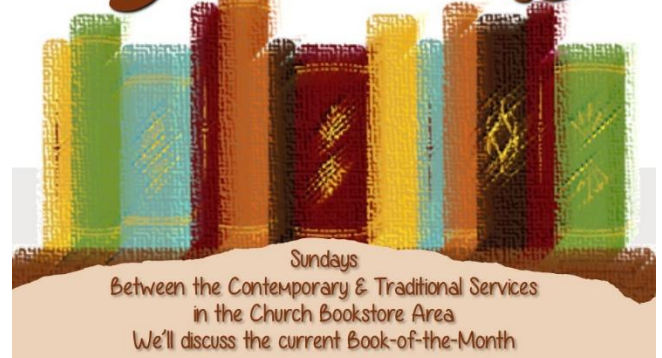


The "Connecting People with God" Committee's March/April Book-of-the-Month is *What if Jesus was Serious?* by Skye Jethani. He takes a look at some of Jesus' most demanding teachings in the Sermon on the Mount and pushes us to ask whether we're really hearing what Christ is saying. The visual component of the book makes it memorable and enjoyable to read, and Skye's incisive

reflections make it worthwhile for any Christian. Please note, we have changed things up with the Book of the Month! We are entering year two as we started the Book-of-the-Month last March, and we are going to try something deeper this year. We will ask anyone who is reading the books we have recommended to meet in the Book Store corner in between the Contemporary and Traditional services any week during the time that the book is emphasized to discuss how it has impacted them, questions they have, or what they love or don't love about the books! For this first attempt, we will break down the book like this:

- April 6<sup>th</sup> – Discuss Part 5
- April 13<sup>th</sup> – Discuss Part 6
- April 20<sup>th</sup> – Easter
- April 27<sup>th</sup> – Discuss Parts 7 – 8
- May 4<sup>th</sup> – Discuss Part 9 and pick up a copy of the next book!

## BOOK CLUB



In addition to in-person worship, we are also providing two streams to watch online services, both live and archived. All online watching happens through our website. For further information, please contact Pastor Don.

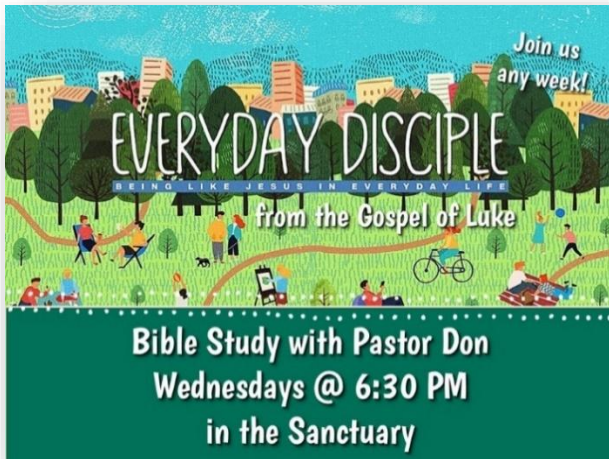


Bethany Church has purchased a subscription for RightNow Media for the purpose of training leadership and volunteers and providing on-going Bible Study materials. What is really exciting is that the whole congregation (members, attendees, and anyone associated with Bethany) will have access to the RightNow Media website. There are literally more than 10,000 videos to choose from. It works much like





Netflix, and there is no additional cost to you. Some of what it includes: training videos, children's TV programs, Bible Studies, Christian Conferences, Leadership Material, and so much more. We can use these online Bible Study courses here at the church; and if a person misses a class, they can view it at home any time they want. You can also use the Bible Studies as an individual, couple, family, or Bible Study group in your own home. Please visit <https://www.rightnowmedia.org/Account/Invite/BETHANYUMC> and complete your profile to sign up. You can also text "BETHANYUMC" to 49775 to register. If you have any questions, please contact the church office.



## **Everyday Disciple – Being Like Jesus in Everyday Life Bible Study with Pastor Don** Wednesdays @ 6:30 PM in the Sanctuary

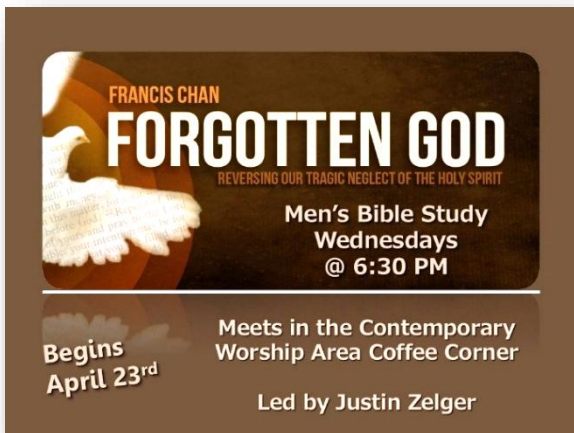
Join us for Bible Study in the sanctuary with Pastor Don. Everyday Disciple will focus on a verse-by-verse method. We will go in depth each week looking at the passage of scripture that will be used for the coming Sunday's sermon in both services. As disciples, we are to grow in our Christlikeness each and every day. With the help of the Holy Spirit, we peel off layers of this world, and we put on the mind of Jesus. Our study of Luke will be just that, an exposure of our worldliness and the call to be more like Jesus. Please bring your Bibles and something to write with. Study notes will be provided. **Will not meet April 16<sup>th</sup>.**

## **Men's Bible Study Covenants (based upon Bible Project resources)**

Wednesdays @ 6:30 PM  
in the Contemporary Worship Area Coffee  
Corner

When Christians talk about having a personal relationship with God, they're usually referring to having God as a friend, or a father, or even a teacher. But the Bible also frequently talks about our relationship with God in terms of a partnership. A partnership involves working alongside someone to accomplish a goal together. We will explore what covenants are, what covenants have been made, and what our part is in the partnership with God. **Will not meet April 16<sup>th</sup>.** <https://bibleproject.com/guides/covenants>





## Men's Bible Study Forgotten God (begins April 23<sup>rd</sup>)

Wednesdays @ 6:30 PM

in the Contemporary Worship Area Coffee Corner

Forgotten God focuses on the Holy Spirit and is inspired by the book of the same name by Francis Chan and Rightnow Media videos. Francis Chan reminds us of the true source of the church's power—the Holy Spirit. Chan contends that we've ignored the Spirit for far too long, and that without Him, we operate in our own strength, only accomplishing human-sized results. As we move from Easter to Pentecost, we will seek to remind ourselves of the importance and power of the Holy Spirit.

## Messy People

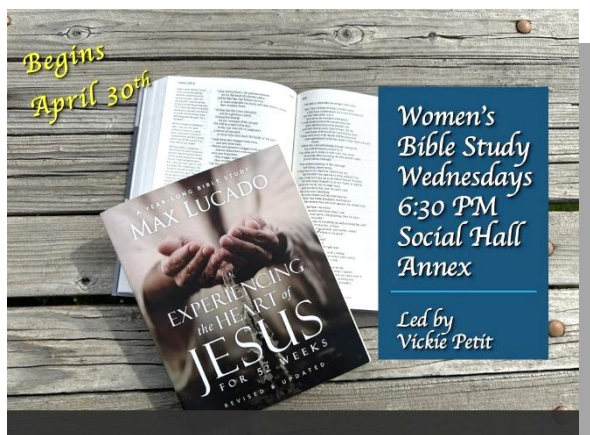
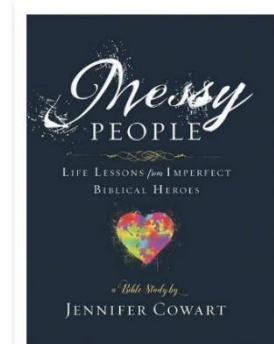
Wednesdays @ 6:30 PM  
in the Social Hall Annex

Every life gets messy at times. Sometimes these messes are literal, like a house that would be easier to condemn than to clean. But sometimes they are intangible messes such as illness, conflict, depression, abuse, bankruptcy, divorce, and job loss. And these messes can be painful, hurting our hearts and our homes. But as we see in the Bible, God loves to use messy people! We will dig into the lives of biblical heroes who were messy people just like us but who were used by God in powerful ways. Together we will examine the stories of five wonderful but messy people and one messy parable character: Rahab, the Prodigal Son, Josiah, Mary, David, and Daniel. From their stories, we will learn how God can use broken people, restore damaged hearts and relationships, give us power to handle our critics, and help us deal with the hard moments of life. Along the way, we'll discover that we don't have to just endure messy lives but can actually learn to thrive with God's guidance and help. In the hands of God, our messes can become His masterpieces! **Will not meet April 16<sup>th</sup>.**

Join us  
any week!

Women's  
Bible Study  
Wednesdays  
6:30 PM  
Social Hall  
Annex

Led by  
Vickie Petit



## Experiencing the Heart of Jesus for 52 Weeks

Wednesdays @ 6:30 PM  
in the Social Hall Annex  
Begins April 30<sup>th</sup>

Although Jesus is familiar, and we know details of his life, could we consider him a companion or dear friend? Do His mannerisms and habits rub off on us because we spend so much time with Him? This study is about



walking with Jesus so closely that we become like Him, that we imitate Him. You will step into Jesus' presence over the course of a year and experience the grace, forgiveness, power, love, and prayer of Jesus. The study is designed that you can start it at any point in the year. It will help you experience Him in fresh and deeper ways, drawing you into the company of our Lord. All you need to do is call on Him, spend time with Him, and you will be changed.



Please register for the meal by the Sunday before on the Connections card in your bulletin, at the Giving Kiosk, in the Giving App (under "events"), or call Jen in the church office.

**\*\*\*There will be no Fellowship Meal on Wednesday, April 16<sup>th</sup>; all activities are cancelled for this evening.\*\*\***

5:30 PM  
\$5 Adult  
(ages 13 & Older)  
\$2.50 Child  
(ages 2 - 12)

## GriefShare

Thursdays at 1:30 PM  
in the Social Hall Annex

New Day ~ New Time

GriefShare gatherings continue in April. Anyone who is dealing with the loss of a loved one is welcome no matter how long it has been since the loss. Please register online at [griefshare.org/findagroup](http://griefshare.org/findagroup) or contact Pastor Larry to register or for more information (717-244-7624) so that we can have enough participant books available. Walk-ins are welcome for any of the sessions.



## CELEBRATE RECOVERY

Thursdays | 6:30 PM  
Dinner at 6 PM

**Is Celebrate Recovery  
for me or someone I know?**

Living in a broken world, we all deal with life's hurts, hang-ups, and habits. No one has the ability, nor should they attempt to face their hurts on their own. Celebrate Recovery is a beautiful community of strugglers that courageously enter this safe and beautiful space to get honest about our pain, and the negative ways we may see ourselves, God, and others. In this process, we come to accept that some of the habits we may have developed to escape our pain have caused destruction in our life and those close to us. Celebrate Recovery is a biblically

balanced approach to help bring sustainable recovery and healing to our hurts. It guides us toward new healthy truths and life-giving habits as we repair our broken relationships. Join more than seven million hurting people across the globe who now walk in freedom through the power of Jesus Christ as we walk through the eight principles of Celebrate Recovery based on the Beatitudes in Matthew 5. These are some of the issues people find freedom from in Celebrate Recovery: Anger ~ Codependency ~ Eating Disorder ~ Love & Relationship Addiction ~ Physical, Sexual, and/or Emotional Abuse ~ Drug Addiction ~ Alcoholism ~ Sexual Addiction ~ Gambling Addiction ~ Grief ~ Mental Health ~ and many other issues we may struggle with.

---



Did you know that Bethany's Meal Ministry consists of a group of volunteers who pitch in to help our fellow parishioners during challenging times?

If you are in a situation that could be eased by having a meal prepared, please contact us for help.

If you are looking for a way to help serve the church and spread the faith, we invite you to join our ministry.

Please know our meals do not require "top chef" quality but rather your favorite recipe for someone to enjoy from your kitchen.

Questions? Please contact Jill Thompson at 717/244-7624.

## Meal Ministry



## SHINE YOUR LIGHT

Hey Bethany, show us where you are "shining your light." You've shared great photos of your vacations and summer fun, now we'd like to see where and how you are impacting our community. Please send in pictures (to Jen in the church office) and share a bit about the organizations where you shine!! Can't wait to see where the light of Christ is shining!! -Sally Roberts

Phil & Sally Roberts and Deb Jackson helped out at a food distribution night in December for the York County Food Bank. Sally noted that volunteers are always needed!





# Peanut Butter

6,075 jars of Peanut Butter—that is all we need! Very few of us will have the opportunity to make a significant change on a global or even larger level. Yet, we can all make an impact in the world in which we live. And I am adding that the impact that may be

needed can be as simple as one jar at a time. The River Valley District will be having a fun Peanut Butter collection during the Lenten season and will be blessing any local food bank/giveaway your church chooses. Our Area goal is 6,075 jars! Peanut Butter is one of the most frequently requested items by food banks because it is kid-friendly, shelf-stable, and protein-rich. We know that peanut butter is a tasty, versatile, and nutrient-dense food. A two-tablespoon serving provides 200 calories, 16 grams of fat, seven grams each of protein and carbohydrates, and 1.5 grams of fiber. We need to be aware that peanuts are the most common food allergens among adults, so you may want to substitute peanut butter with sunflower butter, coconut butter, etc.—all good! I look forward to hearing how your church does! -Rev. Dr. Gary Weaver, Superintendent, River Valley District



Get your Apple  
Dumplings before  
they are gone!



\$7/pack of two

See Karen Miller in the Children's Department,  
Jane Wiertel, or Jen in the Church Office.  
Available on Sundays and during the week!

LifePath Christian Ministries offers a great missions opportunity.

*Corners of Your Field is a partnership opportunity between local churches and LifePath Christian Ministries. Corners of Your Field encourages attendees of our partner churches to be intentional about selecting their gently used household items as a donation to LifePath Thrift Stores. The stores then return a portion of the value of these items in the form of gift cards to your church to help those directly in your care.*

**LIFEPATH**  
Christian Ministries

The above statement is taken from the LifePath website. When you make a donation of gently used items to their thrift stores, you can link your name to Bethany UMC, Red Lion. By doing that, the donations, etc. are kept track of, and LifePath gift cards will be sent to the church quarterly. These can then be given to those in need of clothing, etc. Bethany Church information is already in their system. Just ask them to link your donation to Bethany Church, Red Lion. What a great and easy way to help our community. Questions? Contact Jen in the Church Office.



It is time to **S P R I N G** into action for our 2025 OCC Ministry! The first workday is scheduled for Tuesday, April 8<sup>th</sup>, at 9:30 AM in our Social Hall. Looking forward to a fresh new start for this year and seeing each of you here. Your loving hearts and helping hands are so much appreciated!

**CARING MINISTRIES**



**Want to be involved?  
Contact Pastor Larry Parlett (717) 244-7624**

**Bethany Church collects items for the following organizations. Collection containers are located outside the church office and inside the back door. Your contributions are greatly appreciated!**



**Cell Phones**  
(for ACCESS-York)  
Contact: Jessica Castle  
(717) 244-7624

**Aluminum Tabs**  
(for Ronald McDonald House)  
Contact: Jane Wiertel  
(717) 244-7624



**Inkjet Cartridges ~**  
This program has been discontinued.  
**We no longer collect aluminum cans.**



Thank you, Bethany, for your prayers, cards, and encouraging words during my recent hospitalization and extended recovery. Thank you to Pastor Don, Pastor Larry, and others who visited me to brighten my day and share positive thoughts with me. During this time while I was in the hospital, my mother, Betty, started to have serious health issues as a result of a fall. She very quickly needed the care of Hospice and ultimately passed away while I was totally incapacitated and unable to be with her. My wife, Becky, along with my daughter, Gwen, and family filled in for me by visiting both mother and me during this very emotional time. I am forever grateful. In all of this, I focused on God to take each of us through this emotional time, and He did.

–Kirby Hickey





Unfortunately, there will not be a Grab 'n Go Sub/Sandwich sale in April. Sales will resume in May with orders due on May 18<sup>th</sup> and delivery on Saturday, May 24<sup>th</sup>, and Sunday, May 25<sup>th</sup>. The Missions Committee thanks you for your support! Questions? Please see Ciny Attig (717-244-7624).

The Transportation Ministry is looking for additional volunteers to help with transportation to church, appointments, and grocery shopping for those who are unable to drive. If you are willing to be on our availability list, please contact Pastor Larry at 717-244-7624.



## The Lion's Den

### **Snack Donation Ideas**

The Lion's Den needs our help! They need water and snack donations. Seventy percent (70%) of the families with children attending Mazie Gable Elementary School live below the poverty line. Sometimes, what they receive at school may be the only food/meal they will eat that day. Below is a list of what The Den is looking for. Please remember, **NO NUTS** for allergy reasons! There are between **25** and **40** kids on any given Tuesday or Thursday. Donations can be dropped off in the Social Hall.

**8 oz.** Water Bottles

### **Individually Packaged**

Fruit Snacks  
Goldfish  
Pretzels  
Chips  
Cookies

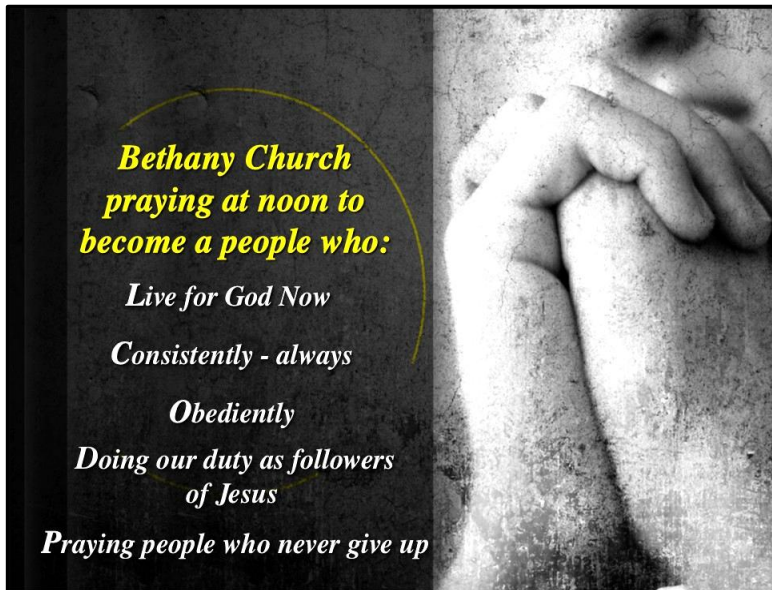
Snack Pack Pudding  
Raisins  
Cheese Crackers  
Popcorn  
Snack Cakes

They also need Board Games, Coloring Books, Crayons, and such for K through 6<sup>th</sup> grade.

# Visitation Program

Bethany Church's Visitation Program is just one way of staying connected to members who have difficulty getting to services but still want to be a part of the Bethany family. By visiting them, we let them know

they are not forgotten and that as God cares, we care. To do this, though, we need faithful visitors who are willing to commit to one visit or contact a month. If this is something you feel called to do, please contact Carol Urey (717) 244-7624. It is with grateful hearts that we thank both visitors and those being visited for this on-going ministry.



**Bethany Church**  
**praying at noon to**  
**become a people who:**

*Live for God Now*

*Consistently - always*

*Obediently*

*Doing our duty as followers*  
*of Jesus*

*Praying people who never give up*



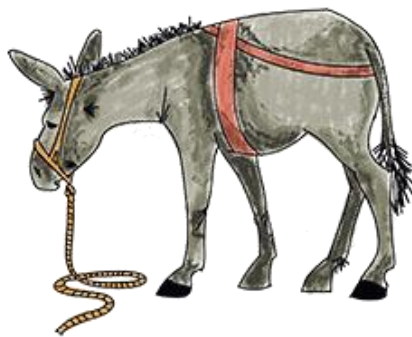
Is it time to replace your Dishcloths (\$4), Scrubbies (\$1.50), or Wool Dryer Balls (\$6/each or 3/\$15)?

A portion of the proceeds benefits Bethany's Missions Committee.

Contact Becky Hickey to order  
717/244-7624

## Be the Donkey

Corrie ten Boom, a devout Christian who helped shelter hundreds of



Jewish people from Nazis during World War II, was asked how she stayed humble despite her fame.

"When Jesus rode into Jerusalem on Palm Sunday on the back of a donkey, and everyone was waving palm branches and throwing garments onto the road and singing praises, do you think that for one moment it ever entered the head of that donkey that any of that was for him?" she replied. "If I can be the donkey on which Jesus Christ rides in his glory, I give him all the praise and all the honor."

Jesus told his followers they'd need to carry (or "take up") their cross. But how well do you carry your Savior? How do you bring him into a world that desperately needs the good news of the gospel?



*Knitting & Crochet Ministry*

**1<sup>st</sup> & 3<sup>rd</sup> Mondays**  
**2:30 - 4 PM**  
**in Bethany House**



# Earth-shaking victory

On Ash Wednesday in 2001, a 6.8 magnitude earthquake shook the Seattle area. Charlie and Ann Lewis, co-pastors in Snohomish, Washington, reflected on the timing:

“While most years we prefer to think of Lent as a contemplative journey of faith as we walk with Jesus toward Jerusalem and the cross, this year we are thinking of how God turned the world upside down at Calvary. From the cross, Jesus cried out with a loud voice, and his life was finished. Then the earth shook violently, the curtain in the temple was torn in two and rocks were split apart. The God who identified with us in our humanity in the incarnation of Jesus Christ demonstrated in that moment the depth of divine love for us — a love that leads God to choose the path of suffering and sacrifice.

“Three days later, the earth shook again — another violent earthquake, and the stone in front of the tomb was rolled away. Then the crucified Christ threw aside the burial cloths, emerging from the darkness of the tomb to walk in the dew of the grass as dawn was breaking across the sky. God had declared victory over sin and death itself. That victory was for us.... God has given us a glorious life that extends into eternity.”



“Hope the choir does some hip-hop for Easter!”

## Meanings in the Meal

Jesus instituted Communion while celebrating the Jewish Passover with his disciples. The meal’s ritual foods hold meaning for Christians, too, because our faith story is interwoven with that of Judaism.

**Matzoh:** This unraised bread recalls the Israelites’ hasty departure from oppression in Egypt. Jesus used the Passover bread to symbolize his body, which delivers us from bondage to sin and death.

**Salt water:** It symbolizes the tears of the Hebrews and of all who suffer in any time and place. Christians believe that in Jesus, God embraced human suffering so we need never face it alone.

**Parsley:** Dipped in the salt water, this green, leafy vegetable represents the Hebrews’ rebirth out of sorrow into the joy of freedom. Easter’s celebration of resurrection proclaims a coming day when God “will wipe every tear from [our] eyes [and] there will be no more death” (Revelation 21:4, NIV).

**Shankbone:** A lamb slaughtered for each Hebrew household meant life for those within. The meat strengthened them for the escape journey, and the blood, swabbed on their doorframe, signaled for Death to “pass over.” Jesus used wine at the Passover meal to symbolize his blood — of the Lamb of God — which he would shed for our salvation.

**Egg:** For Jews celebrating Passover, an egg symbolizes memory of the Exodus and renewal of faith. For Christians at Easter, eggs — especially open, empty ones — call to mind Jesus’ empty tomb, renewal, and abundant life.

# Our Mobile App for Giving Has Changed



Our easyTithe Giving App has been replaced with the “My Church Home” app by Ministry Brands Amplify (see below). Once you download the App, search for zip code, 17356, and Bethany UMC should pop up. Choose as your church. Unfortunately, we’ve been told, you will have to enter all your information again to register on the app. Giving Online, Text, and the Giving Kiosk saw no change. If you have any questions, please see Jen in the church office.



**My Church Home**  
by Ministry Brands Amplify

Open

★★★★☆7

Ministry Brands

Lifestyle

**COFFEE & Donuts**

**Sunday Mornings in the Contemporary Worship Area at the Coffee Bar - All are welcome!**

before Sunday School & the 9 AM Contemporary service; after 9 AM service & before the 10:30 AM Traditional Service

Are you or a loved one experiencing a short-term illness, injury, or convalescence and are in need of a piece of medical equipment? The Medical Equipment Warehouse continues to be of service to Red Lion and surrounding areas. The Lord has helped us to serve others by lending out Wheelchairs, Scooters, Walkers, Rollators, Canes, Crutches, and other items for long or short-term use. Just contact Brian Overmiller with your medical equipment needs.

## **MEDICAL EQUIPMENT LENDING WAREHOUSE**

Would you like to feel the joy of serving both your church family and your community while taking only a small amount of your time? Please consider joining our group. To learn more, contact Brian Overmiller (717) 244-7624.